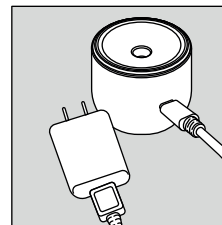
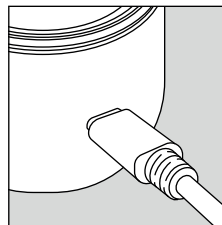
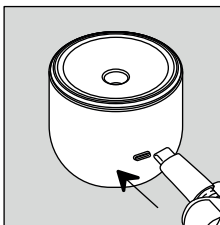
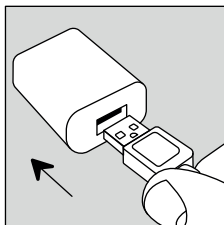


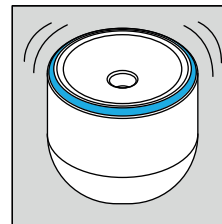
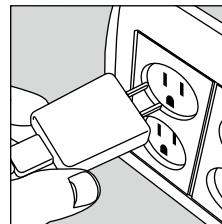
# How to Use the Vibrant System

## Setting Up the Pod

1. Connect the USB cable to the AC/DC adaptor and to the Pod.



2. Connect the AC/DC adapter of the Pod to an electrical outlet. A short 'beep' will be heard, and the light ring indicator will flash for about 40 seconds before turning solid blue, indicating that the Pod is ready for use.

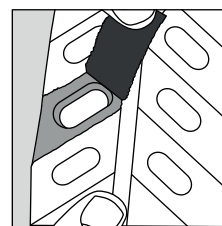
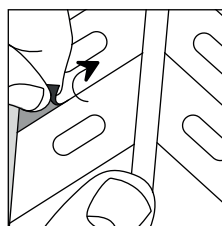


3. When using the Pod, it is recommended to keep it powered on for approximately 10 minutes.

## Activating and Taking the Capsule

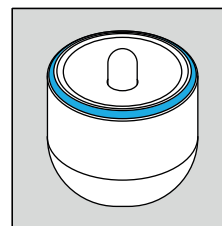
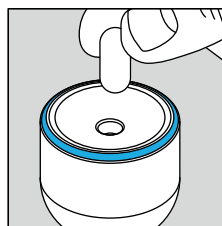
The Capsule must be activated before it is swallowed.  
To activate a Capsule:

1. Remove one Capsule from the blister package.



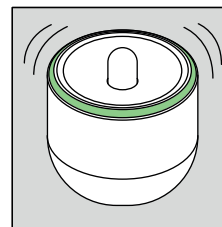
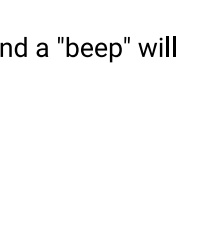
2. Remove the Pod cover.

3. Verify the light ring indicator is solid blue.



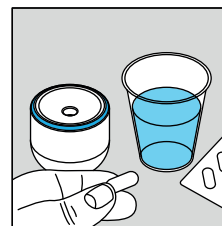
4. Check to ensure the absence of foreign matter in the Capsule groove prior to use. Place Capsule in the designated groove in the center of the Pod. Remove your hand and wait.

5. The light ring indicator will flash for a few seconds before turning solid green, and a "beep" will be heard, indicating the capsule is activated.



 Now the Capsule is ready to be swallowed.

7. Immediately swallow the Capsule with one glass (~8 ounce) of water. After removing the Capsule from the Pod, the light ring indicator turns blue.



8. Replace the Pod cover.

9. Keep the Pod powered on for approximately 10 minutes before disconnecting it.

10. The Capsules are intended to be orally ingested up to 5 times per week, as directed by a physician. The Capsule should be taken shortly before going to sleep on 5 out of 7 days of the week according to the following schedule:  
3 days on, 1 day off, 2 days on, 1 day off.

**Caution: Do not connect the USB cable to any other device (such as a computer) as this may potentially harm the Pod.**